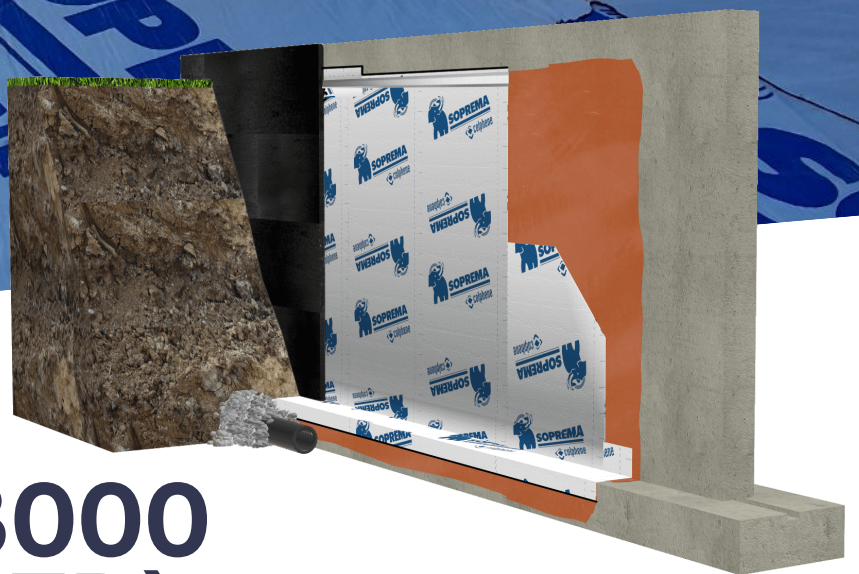
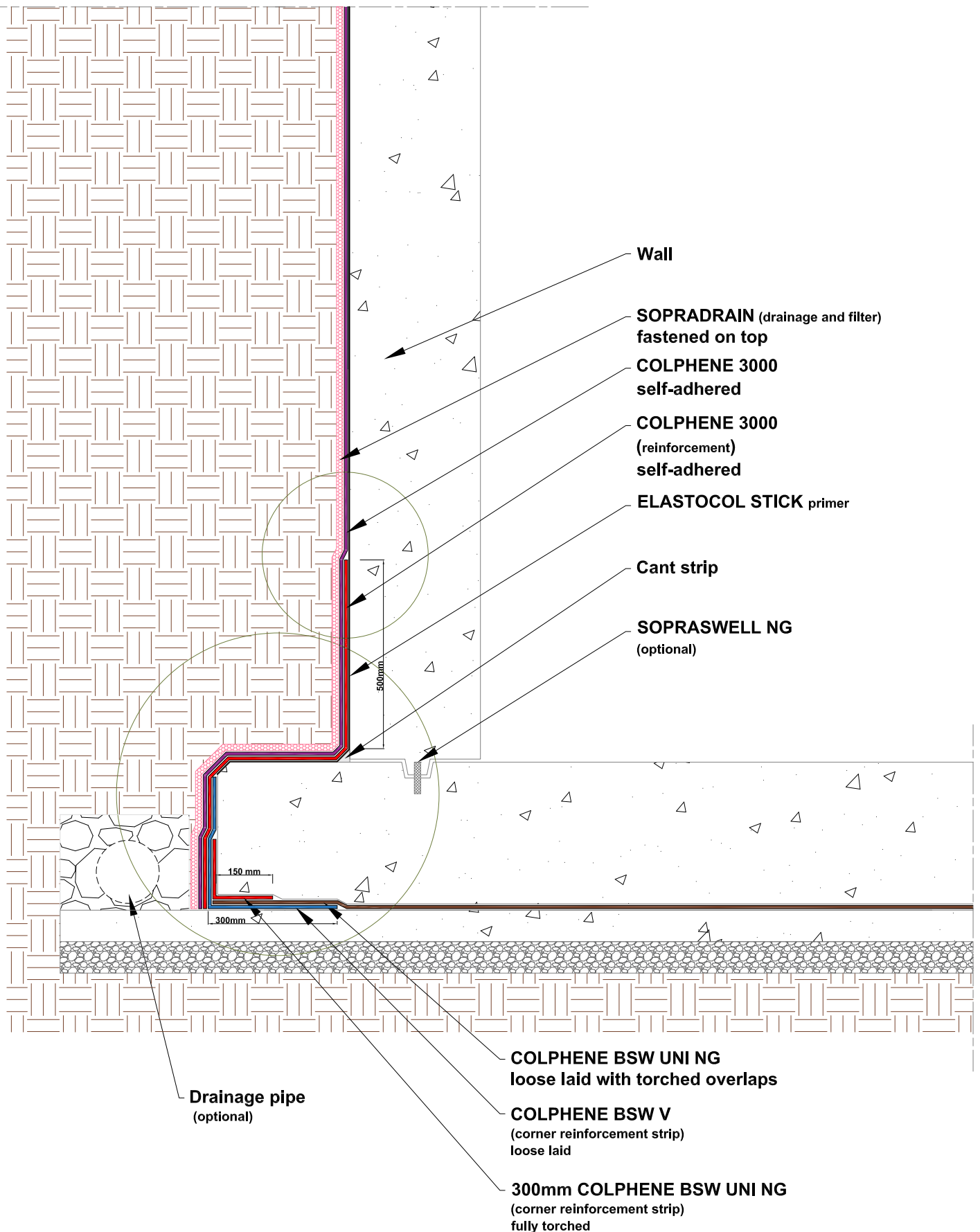


TECHNICAL DETAILS



Foundations
COLPHENE 3000
(POST-APPLIED)

soprema.com.au



COPYRIGHT 2021 SOPREMA

Without chamfer on all angles, a corner reinforcement must be previously applied

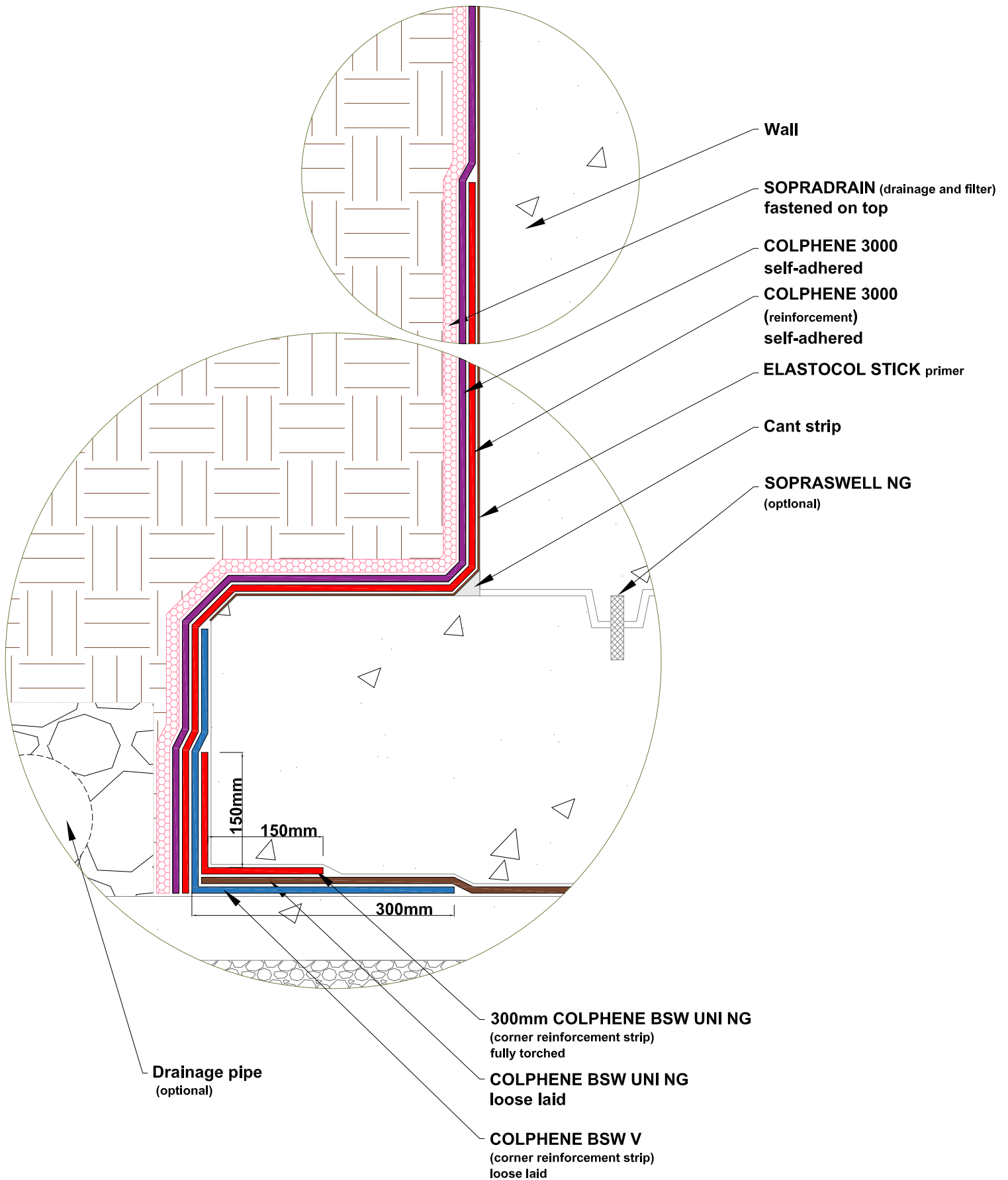
1. Detail to be used in conjunction with Soprema general requirements, application methods and approved details.
2. Usage of this drawing is governed by terms of service for Soprema detail. Please consult these terms of service prior to utilizing this drawing.



LEVEL 35, BARANGAROO AVENUE, SYDNEY, 2000
WWW.SOPREMA.COM.AU

TITLE: **ONE LAYER SYSTEM POST-APPLIED SELF-ADHERED DETAIL**

PROJECT:			DRAWING NUMBER:
SCALE:	NTS	DATE:	2021
			FG7



COPYRIGHT 2021 SOPREMA



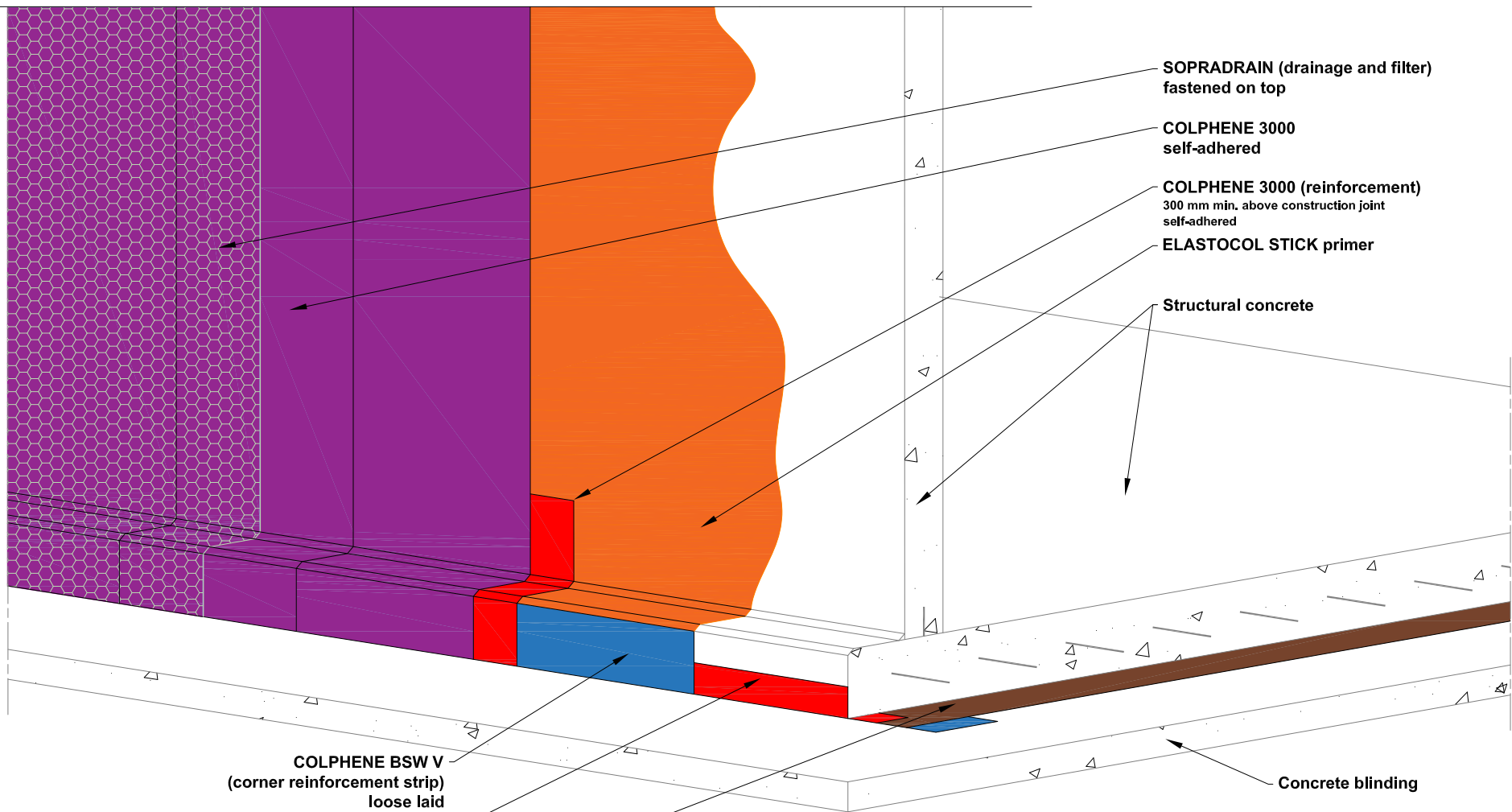
LEVEL 35, BARANGAROO AVENUE, SYDNEY, 2000
WWW.SOPREMA.COM.AU

Without chamfer on all angles, a corner reinforcement must be previously applied

1. Detail to be used in conjunction with Soprema general requirements, application methods and approved details.
2. Usage of this drawing is governed by terms of service for Soprema detail. Please consult these terms of service prior to utilizing this drawing.

TITLE: **ONE LAYER SYSTEM POST-APPLIED SELF-ADHERED ZOOM VIEW**

PROJECT:			DRAWING NUMBER:
SCALE:	NTS	DATE:	2021
			FG8



**SOPRADRAIN (drainage and filter)
fastened on top**

**COLPHENE 3000
self-adhered**

**COLPHENE 3000 (reinforcement)
300 mm min. above construction joint
self-adhered**

ELASTOCOL STICK primer

Structural concrete


Concrete blinding

**COLPHENE BSW V
(corner reinforcement strip)
loose laid**

**COLPHENE BSW UNI NG
(corner reinforcement strip)
fully torched**

**COLPHENE BSW UNI NG
loose laid with torched overlaps**

COLPHENE BSW V 

COLPHENE 3000 

COLPHENE BSW UNI NG 

**COLPHENE BSW UNI NG
REINFORCEMENT** 

**COLPHENE 3000
REINFORCEMENT** 

Without chamfer on all angles, a corner reinforcement must be previously applied

COPYRIGHT 2021 SOPREMA



SOPREMA

LEVEL 35, BARANGAROO
AVENUE, 2000, SYDNEY
WWW.SOPREMA.COM.AU

TITLE: ONE LAYER SYSTEM POST-APPLIED
WITH
SELF-ADHERED MEMBRANES

PROJECT:

DRAWING NUMBER:

SCALE:

NTS

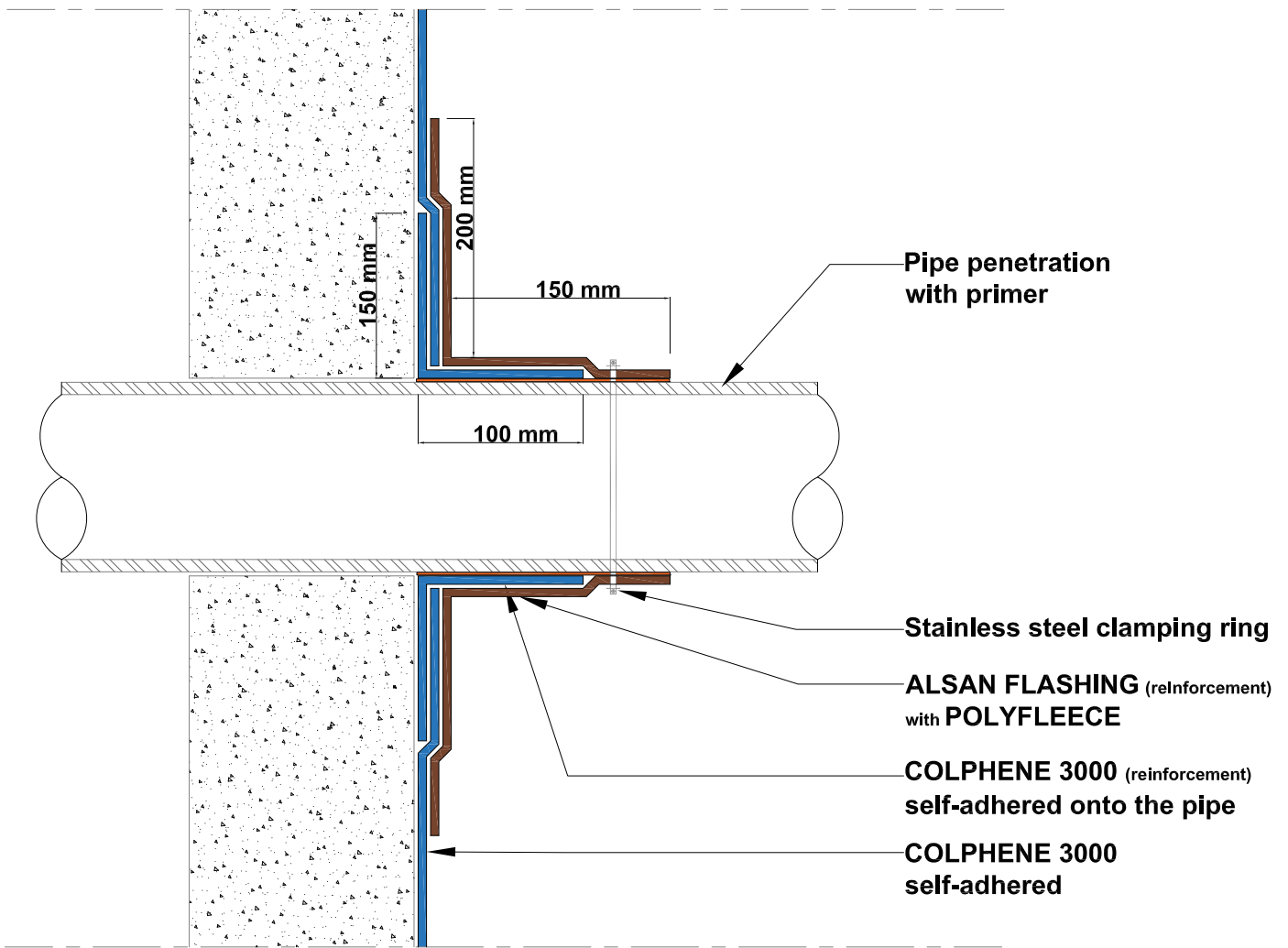
DATE:

2021

FG9

NOTE:

This detail is only indicative and should be verified by the designer and/or the applicator according to real job site conditions.



COPYRIGHT 2022 SOPREMA



LEVEL 35, BARANGAROO
AVENUE, SYDNEY, 2000
WWW.SOPREMA.COM.AU

TITLE: PIPE PENETRATION DETAIL

PROJECT:

DRAWING NUMBER:

SCALE:

NTS

DATE:

2022

FG26

NOTE:

This detail is only indicative and should be verified by the designer and/or the applicator according to real job site conditions.



SOPREMA's technical team will be more than happy to assist you with any queries you may have. Shall you have any questions, or need assistance with details review for your project, do not hesitate to contact us.

Richard Ajavon
Technical Manager

rajavon@soprema.com.au

