

WP140 Waterproofing Lift Pit Walls - Negative Application (Poured Insitu Concrete)

Preparation:

1. All surfaces to be waterproofed must be firm, clean, dry, sound and smooth. All grease, oil, wax, curing compounds, loose material, paint and any other contaminants must be removed, masonry surfaces must be pointed flush and surface defects repaired. New concrete must be cured for a minimum of 28 days.
2. External corners to be waterproofed must be bevelled to ensure a smooth transition of membrane from vertical to horizontal surfaces.

Installation:

1. Repair all surface defects in concrete slab with **Aftek Penapatch Structural HB80**.

Aftek Penapatch Structural HB80 is a high strength; high build shrinkage compensated structural repair mortar.

2. Install **WPA 2010 Hydrophilic Waterstop** directly to a concrete substrate prior to the wall installation. Ensure placement is centred and firmly pressed with a minimum 75mm concrete cover.

WPA 2010 Hydrophilic Waterstop is a new generation, self-adhesive, high performance acrylic polymer base expanding hydrophilic water stop.

3. If required, Install **WPA Injection Hose** laid flat along the concrete substrate, centred and mechanically fixed with appropriate hose clamps, spaced 100-150mm. Ensure a minimum 100mm concrete cover from any external edge.

WPA Injection Hose is a re-injectable injection hose system, used to seal construction joints in concrete structures against water ingress.

4. Install **WPA 2010 Hydrophilic Waterstop** around all pipe penetrations. The waterstop must be packed in between at least a 75mm concrete cover.

5. Repair all surface defects in the poured concrete walls with **Aftek Penapatch Structural HB80**.

6. Install an appropriate cove to all vertical and horizontal internal corners using **Aftek Penapatch Structural HB80**.

7. Prime PVC and other non-porous substrates using **WPA 160** primer.

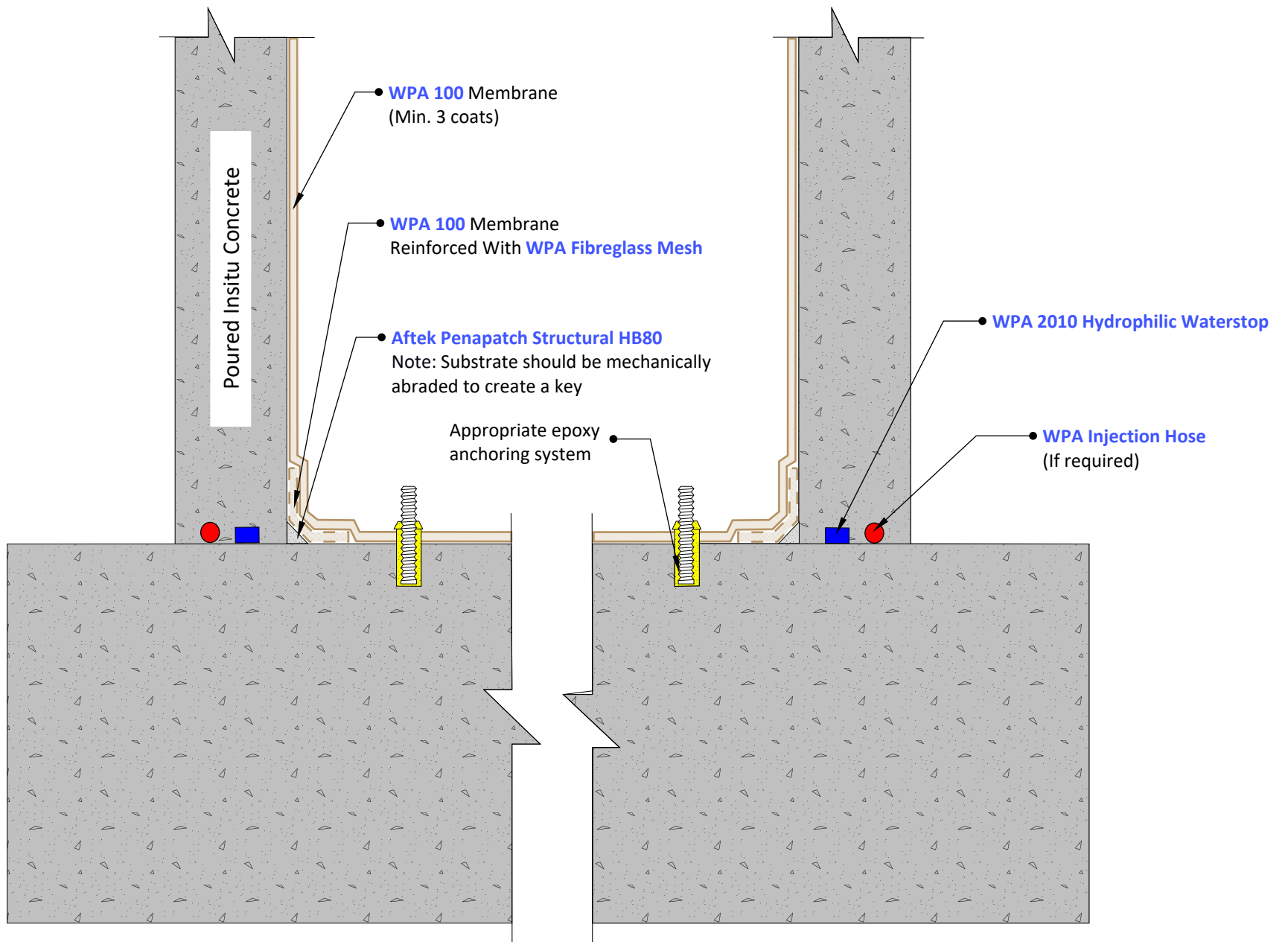
WPA 160 is a specialised solvent free primer designed for enhancing the adhesion of subsequent membranes, adhesives, toppings and decorative finishes over non-porous substrates.

8. Install a reinforcing layer over all coves using **WPA 100** membrane, with **WPA Fibreglass Mesh** embedded into membrane reinforcing layer

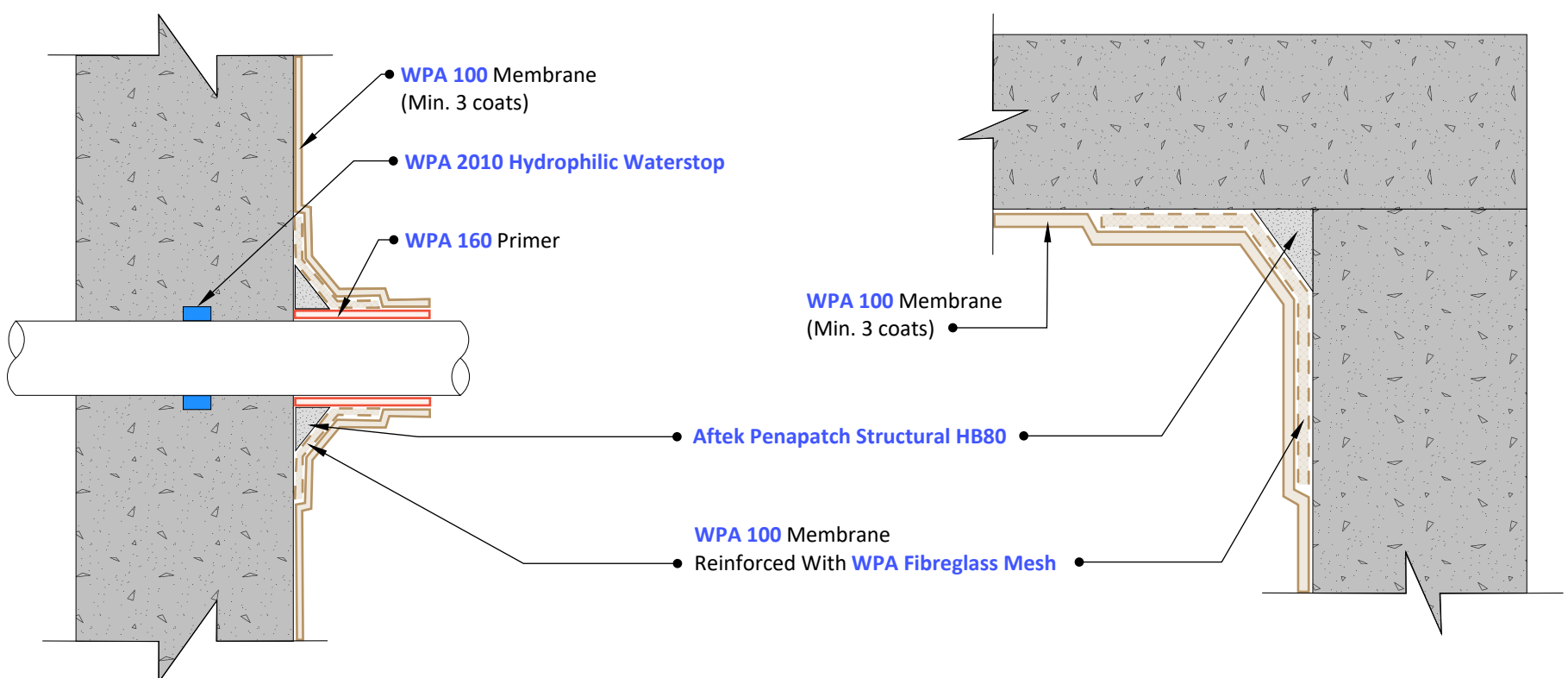
WPA 100 is a single component, fibre reinforced, rapid drying, cementitious waterproofing membrane.

WPA Fibreglass Mesh is an alkali-resistant fibreglass mesh used in reinforcing protective waterproofing compounds, anti-fracture membranes and insulating materials.

9. Install three coats of **WPA 100** membrane to achieve minimum 3mm dry film thickness. Ensure that the previous coat has completely dried before applying the subsequent coat(s). NOTE: All penetrations must be waterproofed.



1 Cross Section
Scale: NTS



2 Pipe Penetration
Scale: NTS

3 Plan View
Scale: NTS

© COPYRIGHT BAYSET PTY LTD

ANY FORM OF REPRODUCTION OF THIS DRAWING IN FULL OR IN PART WITHOUT THE WRITTEN PERMISSION OF BAYSET PTY LTD CONSTITUTES AN INFRINGEMENT OF COPYRIGHT



**Waterproofing Lift Pit Walls
- Negative Application
(Poured Insitu Concrete)**

DRAWING NUMBER

WP140

SCALE: NTS

RELEASE: August 21, 2024

DRAWN BY: CS