



BEACH LIFE ALEX 118 ALEXANDRA PARADE, QLD 4572

Date: January 2021
Project: Beach Life Alex
Builder: Cube Developments
Contractor: McNab Constructions
Applicaton: Waterproofing & Tiling

PRODUCTS USED

WPA 200
 WPA 230UV
 WPA 360
 WPA 460
 WPA 500
 WPA MS
 WPA Elastoband
 WPA Drainage Cell
 Hychem E100
 Hychem SupaFloor
 Admil SupaSeal PU

McNab completed this beautiful high-end residence for Cube Developments, using a Bayset Specification, in January 2021. Beach Life Alex offers 57 apartments, including four luxury penthouses, and 10 sky homes, communal recreation areas and never-to-be-built-out views of the ocean.

All apartments have lake or ocean views while the design of the building incorporates a two-storey atrium with a vertical garden to increase natural lighting and ventilation.

In partnership with Cube, Project Urban and Sprout Architects, a new benchmark for residential luxury on the Sunshine Coast.

The Beach Life complex includes an outdoor BBQ area, pool, spa & indoor gym room. It is located directly opposite Alexandra Headlands Beach with a park directly behind it.

PRODUCTS SPECIFIED

BIN STORE ROOM

Primer: Hychem E100 Epoxy Primer is a solvent-based, two-component epoxy primer, generally used to prime concrete surfaces prior to the application of the main coating products or systems.

Epoxy Flooring: Hychem SupaFloor is a multi-purpose, solventless epoxy flooring product designed to be used as either a smooth roller-applied coating or as a self-smoothing base to be broadcast with selected aggregates and sealed with a coat of itself. (1st coat).

Slip Resistance: Broadcast CA 60 or similar non-slip aggregate to refusal over the wet base coat.

Wear Coat: Hychem SupaFloor is a multi-purpose, solventless epoxy flooring product designed to be used as either a smooth roller-applied coating or as a self-smoothing base to be broadcast with selected aggregates and sealed with a coat of itself. (2nd coat).

WINDOW REVEALS

Primer: WPA 460 is a two-part water-based epoxy primer used to seal concrete and masonry surfaces.

Transitions: WPA MS is a single-component, moisture-cured silane-modified hybrid sealant free of solvents and isocyanates, with a very low VOC content.

Membrane: WPA 230UV one-part fibre reinforced water based polyurethane membrane (minimum of 2 coats to achieve a DFT of 1000 microns).

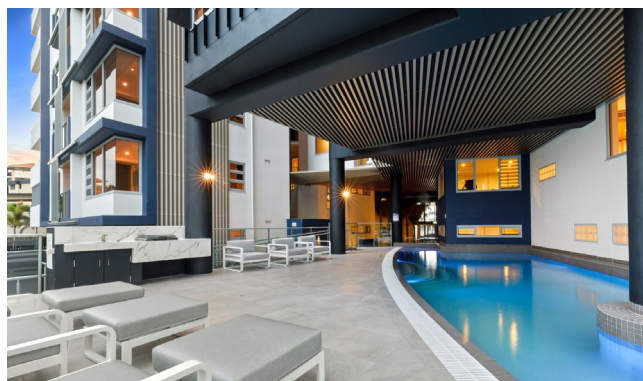
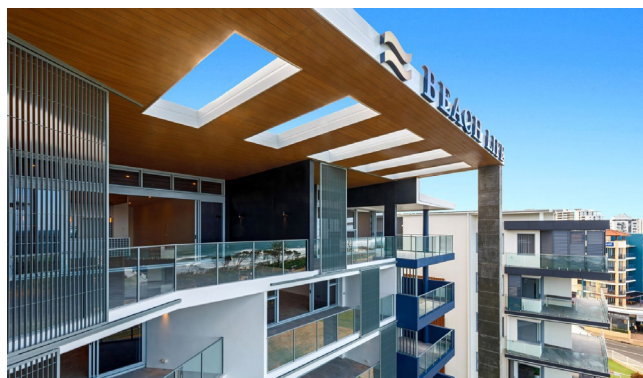
GARDEN/PLANTER BOXES

Primer: WPA 460 is a two-part water-based epoxy primer used to seal concrete and masonry surfaces.

Transitions: WPA Elastoband is an innovative detailing system designed for waterproofing and sealing all types of joints, junctions and general areas subject to movement.

Membrane: WPA 200 is a highly flexible, two-part, rapid-drying, cementitious waterproofing membrane,

Membrane Protection: WPA Drainage Cell is a two-core drainage sheet consisting of a non-woven geotextile filter layer thermally welded to a water-impermeable, recycled HDPE (High-Density Polyethylene) drainage membrane.



PRODUCTS SPECIFIED

INTERNAL WET AREAS

Primer: WPA 360 is a water-based, low-solids, fast-drying primer.

Fillets /

Bond Breaker: WPA MS is a single-component, moisture-cured silane-modified hybrid sealant free of solvents and isocyanates, with a very low VOC content.

Membrane: WPA 500 is a waterborne flexible waterproofing membrane specifically designed for use under ceramic and stone tile finishes.



GROUND FLOOR TERRACES

Primer: WPA 460 is a two-part water-based epoxy primer used to seal concrete and masonry surfaces.

Fillets /

Bond Breaker: WPA MS is a single-component, moisture-cured silane-modified hybrid sealant free of solvents and isocyanates, with a very low VOC content.

Membrane: WPA 500 is a waterborne flexible waterproofing membrane specifically designed for use under ceramic and stone tile finishes.



BALCONIES & DOOR REVEALS

Primer: WPA 460 is a two-part water-based epoxy primer used to seal concrete and masonry surfaces.

Fillets /

Bond Breaker: WPA MS is a single-component, moisture-cured silane-modified hybrid sealant free of solvents and isocyanates, with a very low VOC content.

Membrane: WPA 500 is a waterborne flexible waterproofing membrane specifically designed for use under ceramic and stone tile finishes.



LIFT OVERRUN

Primer: WPA 460 is a two-part water-based epoxy primer used to seal concrete and masonry surfaces.

Transitions: Admil SupaSeal PU is a low-modulus, Hybrid Polyurethane, flexible joint sealant and adhesive that is free of Isocyanates and other hazardous raw materials and omits low odour.

Membrane: WPA 230UV one-part fibre reinforced water based polyurethane membrane (minimum of 2 coats to achieve a DFT of 1000 microns).

