

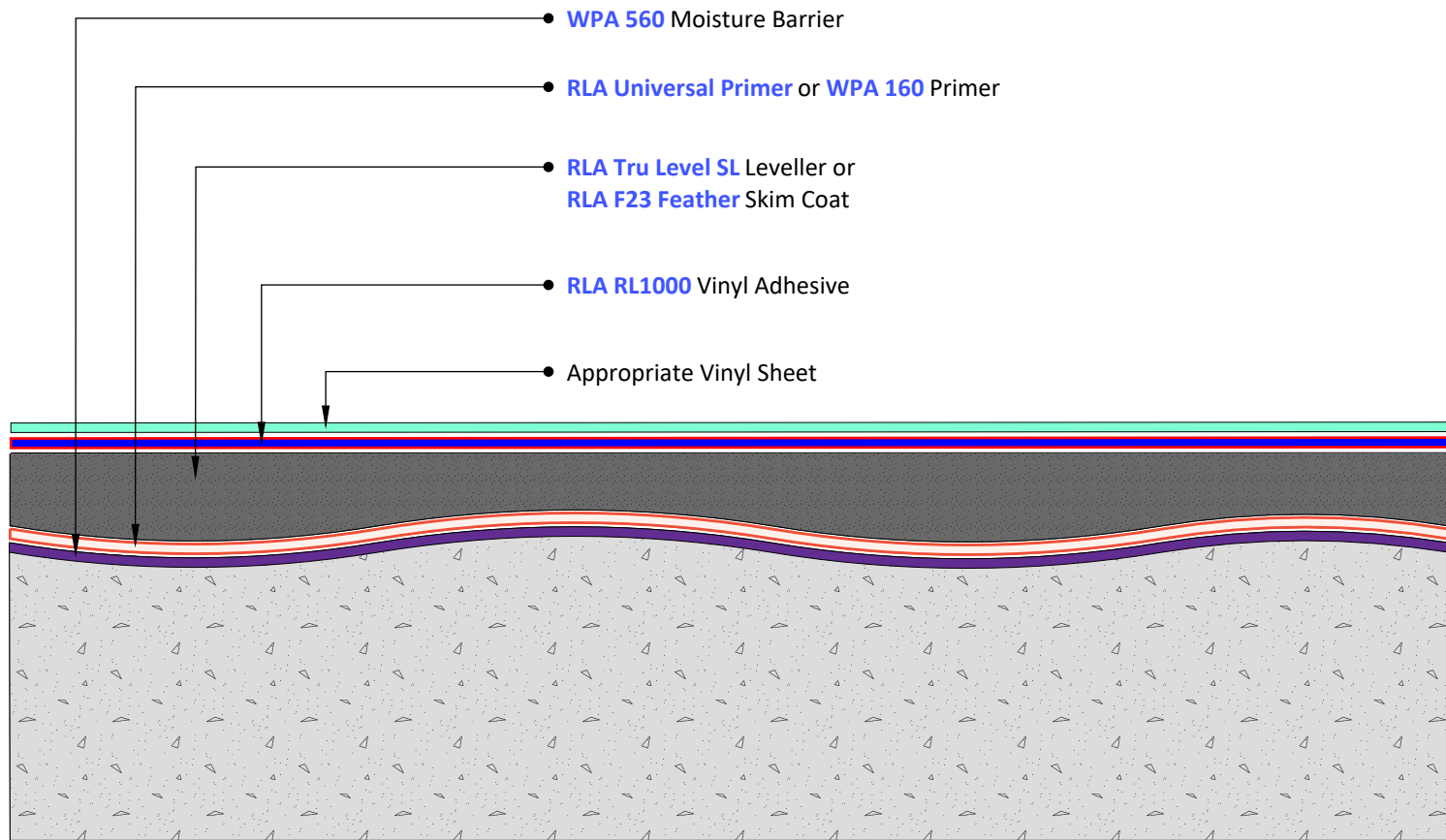
FL700 Floorcoverings - Vinyl Sheet

Preparation:

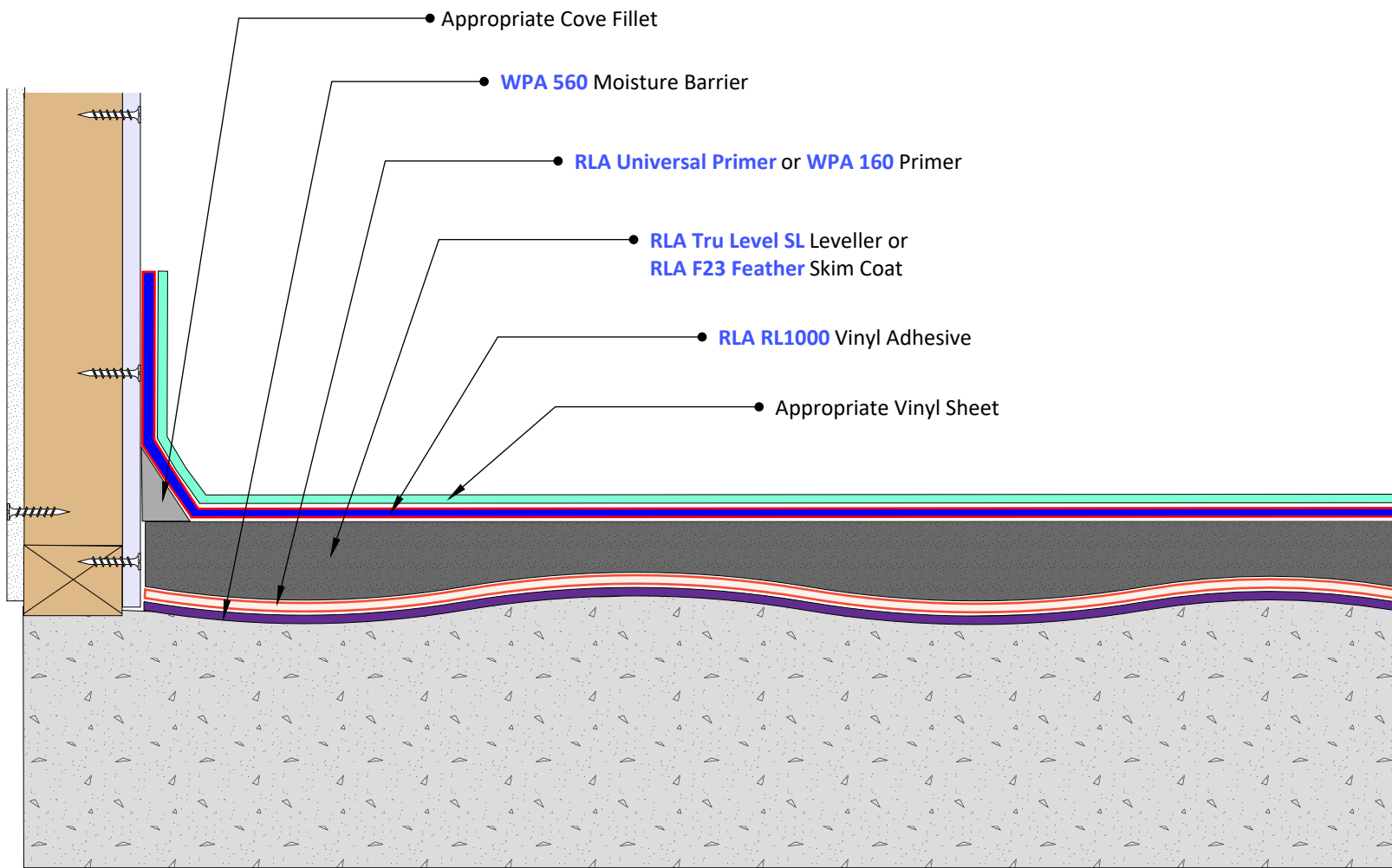
1. Substrates must be firm, clean, dry, and sound. Substrates and subfloors must be free of grease, oil, wax, curing compounds, high levels of moisture (hydrostatic pressure), loose material, paint and any other contaminants. New concrete must be cured for a minimum of 28 days.
2. Thoroughly vacuum loose material and dust.
3. If mechanical preparation is required, prepare the floor using recommended methods as advised by substrate manufacturer.
4. For concrete floors, moisture content and relative humidity tests should be conducted prior to installation.

Installation:

1. Vinyl installation shall be in accordance with AS 1884 Floor Coverings - Resilient Sheet and Tiles - Installation Practices.
2. Apply **WPA 560** as a moisture & vapour barrier, if relative humidity tests show moisture above 80%, or hydrostatic pressure and rising dampness are present.
WPA 560 is a two-part, water-based epoxy primer, designed as a water and vapour proof coating under waterproofing membranes.
3. Apply **RLA Universal Primer** or **WPA 160** on all non-porous substrates, including where **WPA 560** has been used.
RLA Universal Primer is a rapid drying, solvent free, low VOC, water-based acrylic primer.
WPA 160 is a specialised solvent free primer designed for enhancing the adhesion of subsequent membranes, adhesives, toppings and decorative finishes over non-porous substrates.
4. Apply **RLA Universal Primer** on all porous substrates.
5. Where required on uneven surfaces of 1 - 30mm, install **RLA Tru Level SL** on primed area/s.
RLA Tru Level SL is a specially formulated floor-levelling compound with excellent flow properties, used for levelling differences from 1mm to 30 mm in thickness in a single application on new or existing internal substrates.
6. Apply a skim coat of **RLA F23 Feather** to all primed surfaces from featheredge to 3mm, where required.
RLA F23 Feather is rapid drying cement based skim and smoothing compound providing a smooth finish and even surface to a variety of internal substrates prior to the application of floorcoverings.
7. If coving is required, install a preformed cove fillet using **RLA Brush Contact Adhesive**.
RLA Brush Contact Adhesive is a high quality brushable grade solvent based (flammable), rapid drying contact cement, which has high strength, excellent ageing and heat resistance.
8. Once the leveling compound has cured, apply a layer of **RLA RL1000** with a notched trowel. Ensure to apply only the amount of adhesive that can be covered within the open time.
RLA RL1000 is a single-part, VOC compliant, isocyanate free, water resistant, resilient flooring adhesive.
9. Install the vinyl sheet into a wet film of adhesive and dry roll on top of the vinyl sheet in a cross hatch motion to ensure the adhesive transfers onto the backing of the sheet vinyl.
10. Ensure all laps are heat welded together and weld rods are levelled with the vinyl sheet.



1 Cross Section
Scale: NTS



2 Wall / Floor Junction
Scale: NTS

© COPYRIGHT BAYSET PTY LTD
ANY FORM OF REPRODUCTION OF THIS DRAWING IN FULL OR IN PART WITHOUT THE WRITTEN PERMISSION OF BAYSET PTY LTD CONSTITUTES AN INFRINGEMENT OF COPYRIGHT



Floorcoverings - Vinyl Sheet

DRAWING NUMBER

FL700

SCALE: NTS

RELEASE: November 15, 2023

DRAWN BY: CS