

WP520 Waterproofing Planter Box - Permanent PVC Formwork (Cementitious)

Preparation:

1. All surfaces to be waterproofed must be firm, clean, dry, sound and smooth. All grease, oil, wax, curing compounds, loose material, paint and any other contaminants must be removed, masonry surfaces must be pointed flush and surface defects repaired. New concrete must be cured for a minimum of 28 days.
2. External corners to be waterproofed must be bevelled to ensure a smooth transition of membrane from vertical to horizontal surfaces.

Installation:

1. Waterproofing installation shall be in accordance with AS 4654.2 Waterproofing Membranes for External Above-Ground Use.

2. Repair all surface defects with [Aftek Penapatch Structural HB80](#).

[Aftek Penapatch Structural HB80](#) is a high strength; high build shrinkage compensated structural repair mortar.

3. Install a Gunnable Waterstop around all penetrations. The waterstop must be packed in between at least a 50mm cover of [Aftek Penapatch Structural HB80](#).

Gunnable waterstop products are caulk grade, single component swelling pastes used to stop water infiltration through concrete construction joints.

4. Install [TPA Screed](#) to achieve appropriate falls to waste. Where a bonded screed is required, apply a bond coat using [TPA 401M](#) or [TPA Lite](#).

Install [TPA Rapid Screed](#) for an engineered or rapid set screed, using a bond coat of [TPA Rapid](#) for bonded screeds.

[TPA Screed](#) is a pre-blended screed mixture for the installation of cementitious screeds and tile beds, suitable for internal and external floor applications.

[TPA Rapid Screed](#) is a pre-blended, rapid set, engineered screed mixture for the installation of cementitious screeds and tile beds, suitable for internal and external floor applications.

5. Install a puddle flange to all waste pipes, ensuring that puddle flanges are recessed into the substrate.

6. Prime Permanent PVC Formwork wall and all other non-porous substrates using [WPA 160](#) primer, such as puddle flanges and PVC pipes.

[WPA 160](#) is a specialised solvent free primer designed for enhancing the adhesion of subsequent membranes, adhesives, toppings and decorative finishes over non-porous substrates.

7. Apply [WPA 460](#) or [WPA 560](#) primer to the concrete substrate being waterproofed.

[WPA 460](#) is a two-part, water-based epoxy primer, used to seal concrete and masonry surfaces.

[WPA 560](#) is a two-part, water-based epoxy primer, designed as a water and vapour proof coating under waterproofing membranes.

8. All transitions must be detailed utilising [WPA Butyl Tape](#).

[WPA Butyl Tape](#) is a multi-purpose self-adhesive detailing tape incorporating a fleece face layer with a release backing film and self-adhesive butyl rubber on the underside. It provides a waterproof seal between most types of joints and transitions in both internal and external applications

9. Apply [WPA 200](#) membrane in a minimum of two coats to achieve the required dry film thickness. Ensure that the previous coat has completely dried before applying the subsequent coat(s).

NOTE: All penetrations must be waterproofed. Membrane must be sealed to and terminate into the puddle flange, and extended vertically to a minimum of 100mm above the expected soil fill level where the planter box abuts a wall.

[WPA 200](#) is a flexible, two-part, rapid drying, cementitious waterproofing membrane system, specifically designed for use under tile, stone and exposed applications.

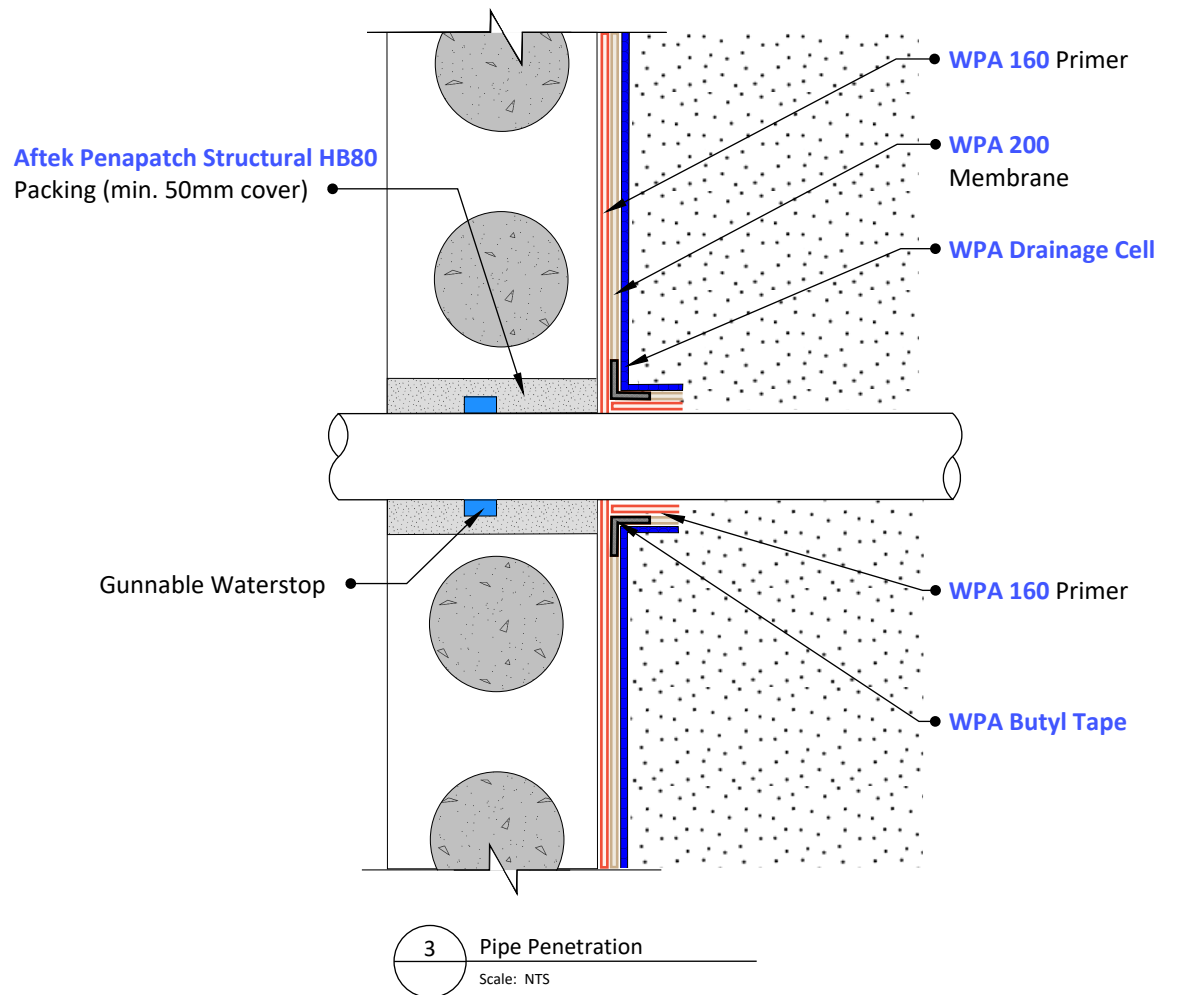
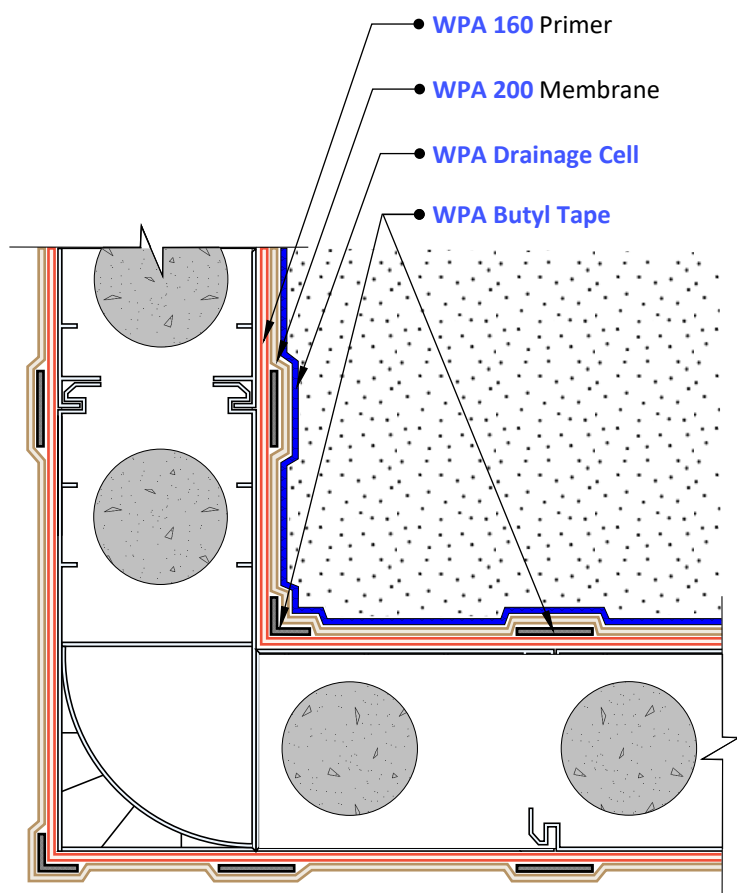
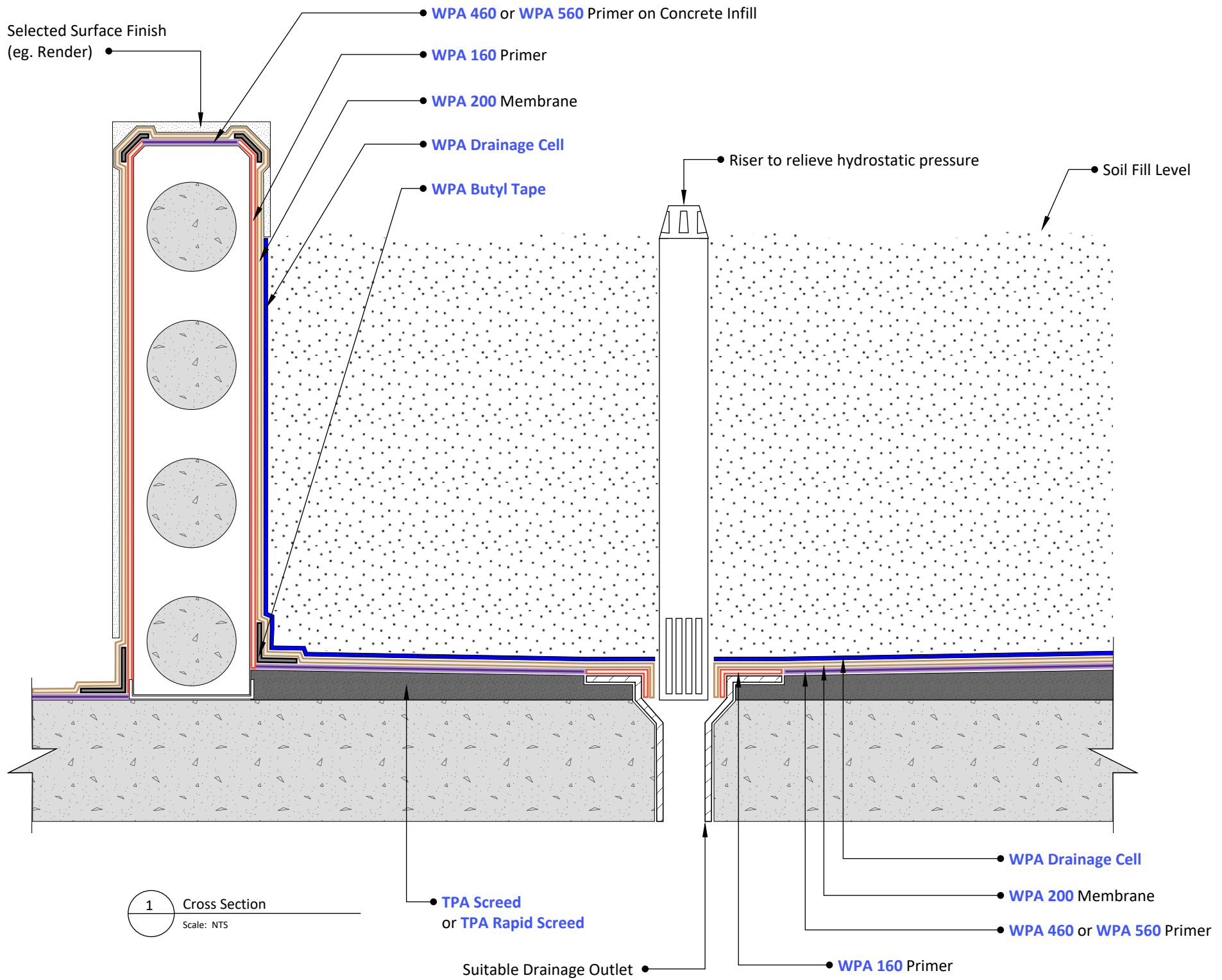
10. Continue the [WPA 200](#) membrane over open edges of the planter box. Externally exposed walls of planter boxes must be waterproofed to prevent failure of the internal planter box membrane.

11. Install [WPA Drainage Cell](#) to all waterproofed surfaces below soil level.

[WPA Drainage Cell](#) is a two-core drainage sheet consisting of a non-woven geotextile filter layer thermally welded to a water impermeable, recycled HDPE (High Density Polyethylene) drainage membrane.

12. Install internally filtered riser for the purpose of relieving hydrostatic pressure.

13. Ensure that membrane which extends above soil fill level is protected from UV damage by selected surface finishes or capping material.



© COPYRIGHT BAYSET PTY LTD
ANY FORM OF REPRODUCTION OF THIS DRAWING IN FULL OR IN PART WITHOUT THE WRITTEN PERMISSION OF BAYSET PTY LTD CONSTITUTES AN INFRINGEMENT OF COPYRIGHT



**Waterproofing Planter Box
- Permanent PVC Formwork
(Cementitious)**

DRAWING NUMBER

WP520

SCALE: NTS

RELEASE: November 9, 2023

DRAWN BY: CS